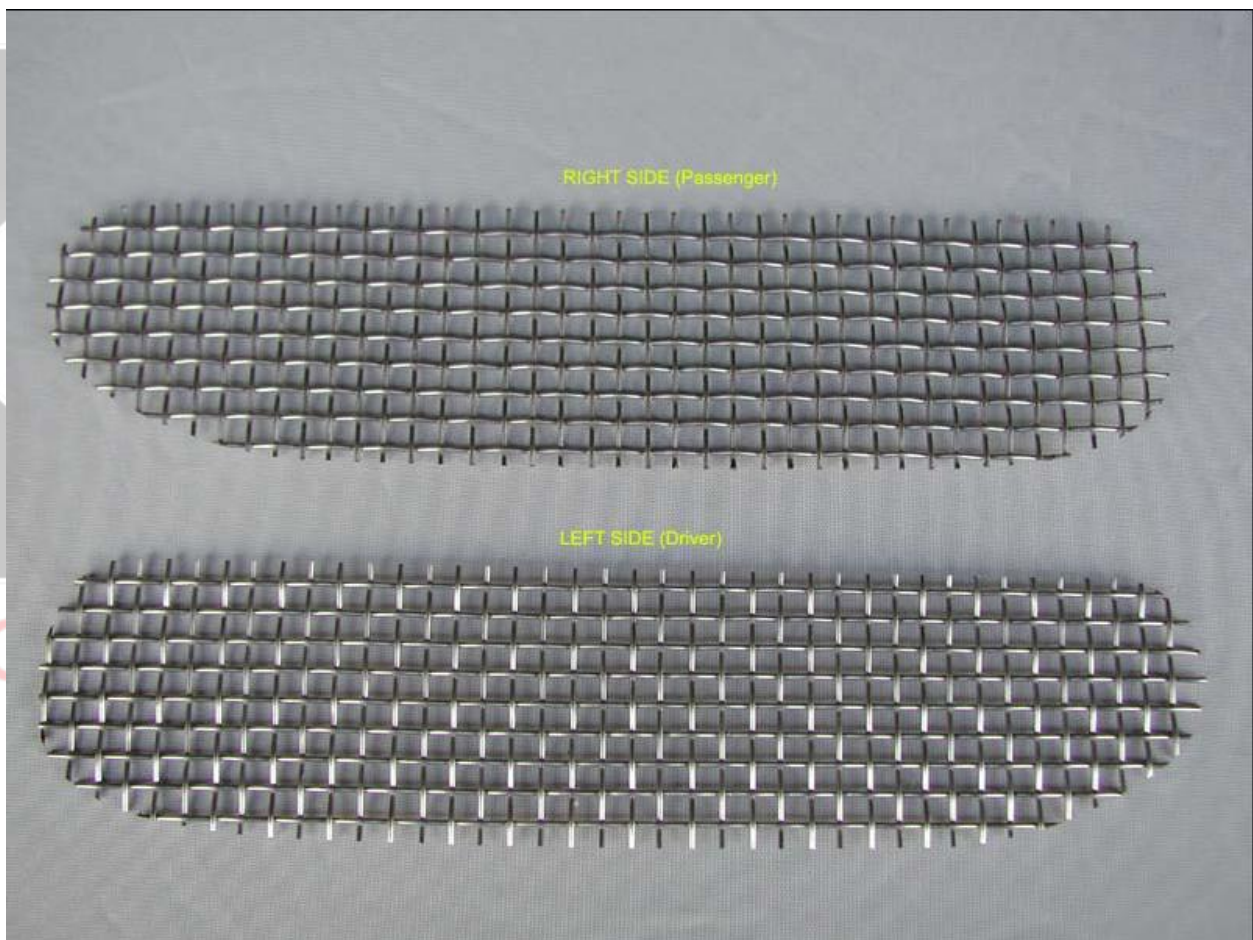


Installing Z06 Style Front Grilles on a 1997-2004 C5 Corvette

Tools Required: Pliers

Installation Time: 5-10 min.

1. **Determine left and right screen.** Notice that one side has more of an angle cut. That will be the side that faces to the outer most corner of the brake duct.

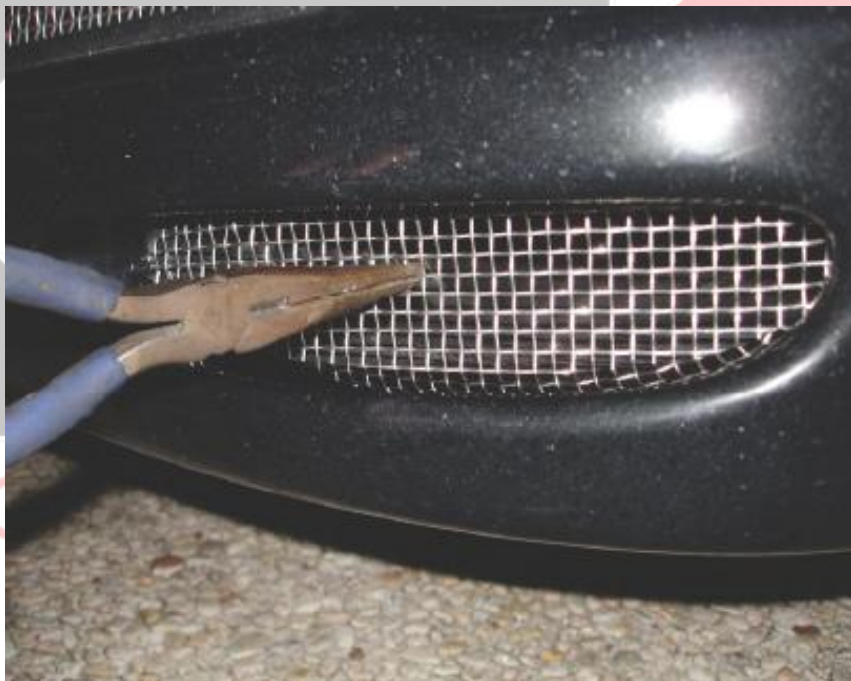


2. **Install Screen.** Take your screens and insert them into the inner brake duct sideways as the picture below instructs. Now you can take the screen and slide it in place. It might take a few minutes to work it in there.



3. Once you can get it in there, use your pliers to position the grille in place. Pull the grill towards you so it will fit snug between the inner brake duct tube and the body of the car. Work each side a little at a time till it's in place.

O N S



4. Make sure to pay close attention that you get this part of the screen pictured below pulled towards you well and it fits tight. You will know when the screen is in place. The spring and tension of the ducting pressing against the screen and fascia will hold it in place.



5. **You are done.** Make sure everything lines up and you are done. :)

Thank you for your purchase and enjoy!

All installation and use of the products purchased from GSCreations, LLC are done at the owners own risk. GSCreations, LLC will not be held responsible for any damage or injury caused by the installation or use of the products purchased here. By using and / or purchasing any product from this GSCreations, LLC, you agree to the terms above.

