

# 97-04 C5 Corvette FLUSH side marker blackout kit

## Install Instructions

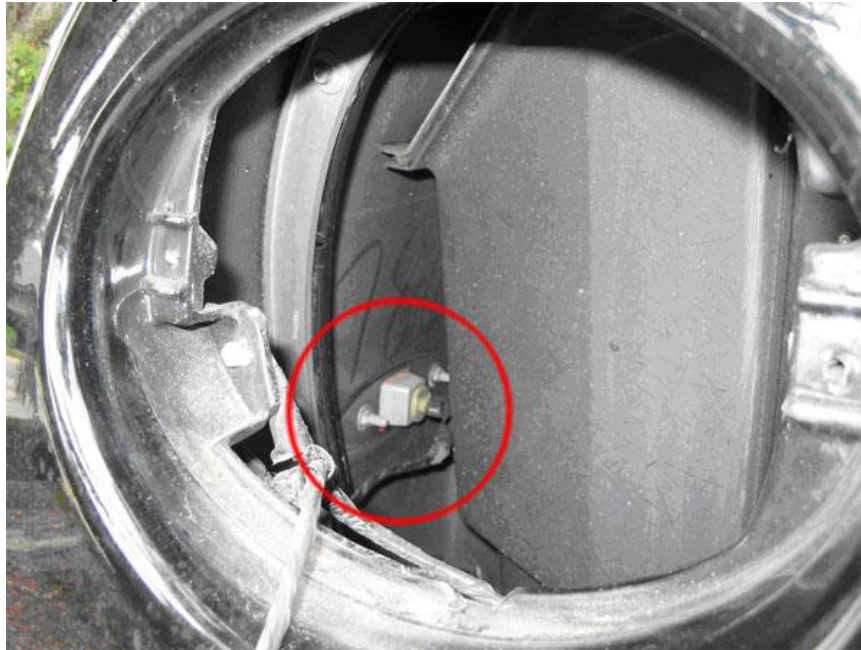
### Tools needed:

<ul style="list-style-type: none"><li>• Ratchet</li><li>• 12mm socket and open head wrench</li></ul>	<ul style="list-style-type: none"><li>• T-15 Torx bit (you may be able to use a small flat head screwdriver if you don't have the Torx bit)</li><li>• One person to help</li></ul>
--	--

### Kit Contents:

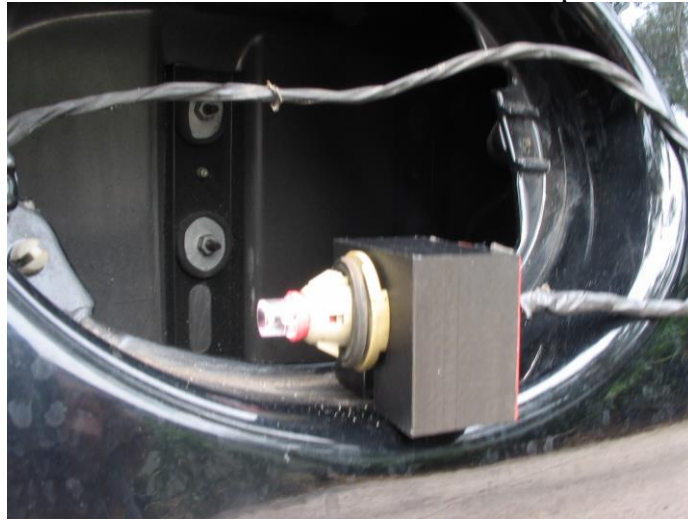
<ul style="list-style-type: none"><li>• 2- Side markers</li><li>• 2- LED's</li><li>• 2- Clear ABS plastic light housing holders</li><li>• Alcohol prep pads</li></ul>
---

- 1) Remove the outer most tail light for which ever side you will be doing first.
- 2) Look in through the tail light opening and remove the light from the side marker housing by twisting a half of a turn (counter clockwise) then pull out.
- 3) Look in through the tail light opening, locate and remove the two 12mm sliver nuts that are holding the factory side marker in place. They might be hard to reach with the socket so try the open head wrench or try to put a long 12mm socket on it and use your hand to twist it off.



- 4) Reach in where the tail light hole is and make sure to clean the area that the black abs light holder will be taped to. This is the inner trunk well wall. ( if you were to look though the side maker cutout, it's the area right behind that)
- 5) \*\*\*\*Take the black ABS holder from the kit and insert the light housing from the car with the wire attached into the piece to the side with out the tape. Install the led into the factory light housing. Turn your parking lights on till you are done

with step 6. ( if the LED does not turn on take it out and flip it around they only



work one way)

- 6) This is where the person helping you joins in. Still have your lights on? Ok, Good. One of you will stand outside of the car looking into the side marker cutout; the other person will stick their hand in through the tail light hole and mock up the position of the led to be centered with the square of the side maker cutout. The led will project its light through this square, so you want to make sure it's centered. Once you feel like it is, take it out, remove the tape from the piece, clean surrounding area well, align it again and press firmly for about 30 seconds



- 7) Remove tape backing and stick on your side marker, pressing firmly for 30 seconds. Now you are done, sit back and be amazed at the new look!



Thank you for your purchase and enjoy!

GS Creations, LLC

[www.GSCreations.com](http://www.GSCreations.com)

[www.stores.ebay.com/GSCreationsLLC](http://www.stores.ebay.com/GSCreationsLLC)